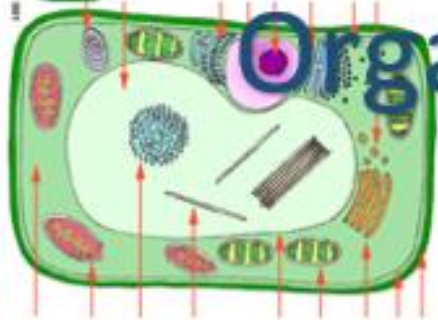


Cell membrane:

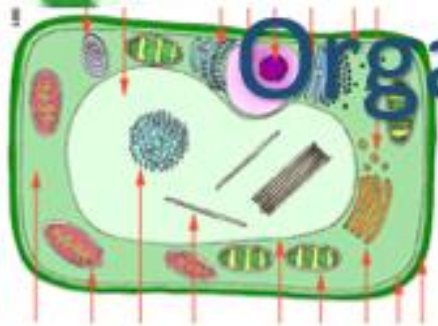
controls what goes in
and out of the cell



Organelles in both animal and
plant cells



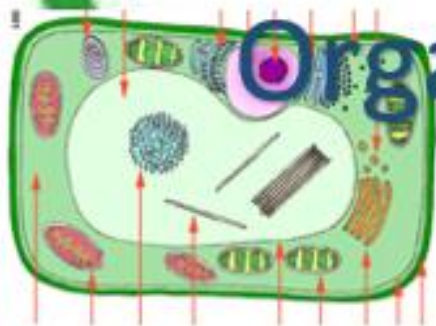
Cytoplasm: A jelly-like fluid that holds organelles in place



Organelles in both animal and plant cells



Nucleus: the
powerhouse or brain
of the cell



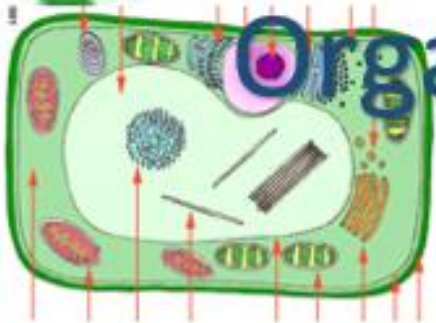
Organelles in both animal and
plant cells



Rough endoplasmic reticulum:

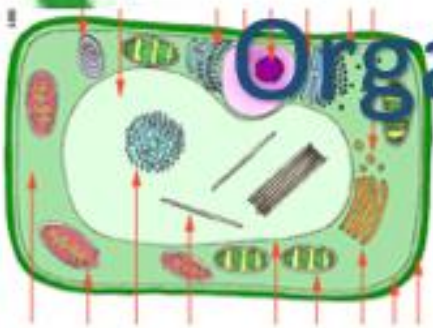
a passageway where ribosomes live; it carries proteins and materials to the rest of the cell

Organelles in both animal and plant cells



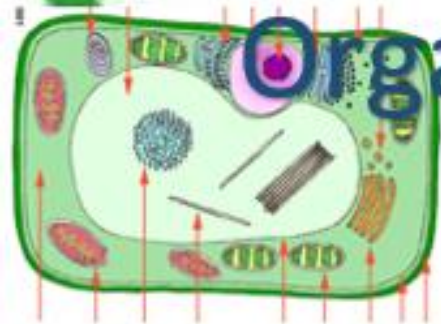
Ribosome: Packages
proteins and ships
them through
vesicles

Organelles in both animal and
plant cells

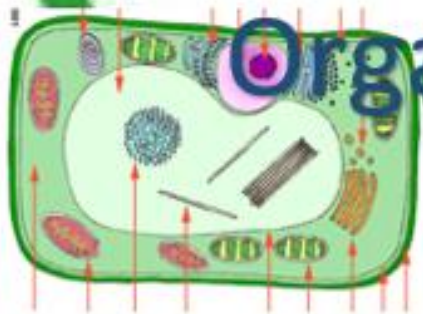


Vacuoles: stores
water, food and
waste

Organelles in both animal and
plant cells



Golgi Apparatus: receives proteins and materials from the E.R., packages them and distributes them.

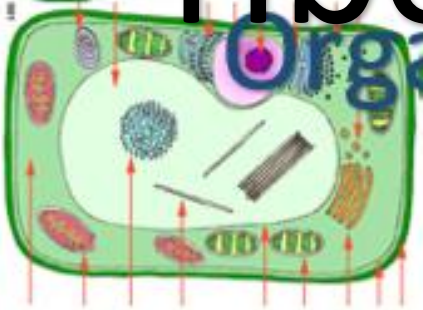


Organelles in both animal and plant cells

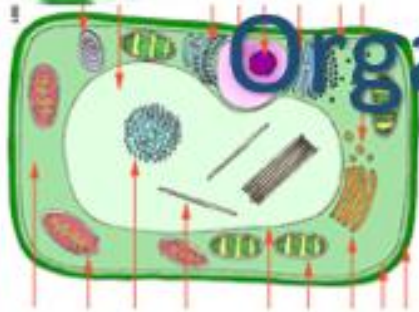


Nucleolus: found
inside the nucleus
and produces
ribosomes.

Organelles in both animal and
plant cells



Mitochondria: power house or energy processor of the cell



Organelles in both animal and plant cells

